

IN-PERSON PRESENTATION GUIDE

Mid-Michigan Symposium for Undergraduate Research Experiences

IN-PERSON TIMELINE

REGISTRATION OPENS

Head to *Spartan Experience Record* to submit your information and let us know you're interested!

MAY 28

PRIORITY REGISTRATION CLOSES

Register before 6/17 to get top priority, abstracts do not have to be completed

JUNE 17

LAST DAY TO UPDATE ABSTRACTS

Upload most updated abstract to SER and check with your mentor for approval

JULY 11

MID-SURE

Mid-SURE! See you at the STEM Facility!

JULY 24

JULY 24: MID-SURE DAY!

POSTER GUIDELINES

Printed size:

40" x 32"
(102 cm x 81 cm)

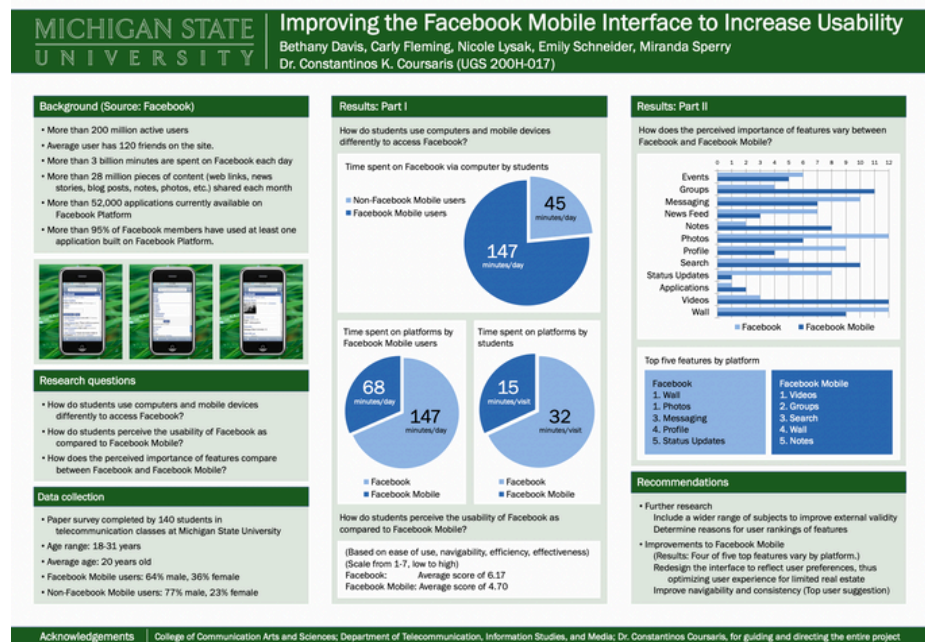
Orientation:

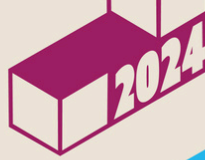
Landscape or portrait

Prepare a short pitch discussing the poster and your research

32"

40"





IN-PERSON PRESENTATION GUIDE

Mid-Michigan Symposium for
Undergraduate Research Experiences

STEP-BY-STEP

REGISTER

- Begin drafting an abstract on ser.msu.edu by 6/17/24
- Abstracts do not need to be completed to register
- **MSU Students:** Fill out the Undergraduate Research Experience module fields to document your research or creative work

FINALIZE

- Finish making revisions to your abstract by 7/11/24
- Ask your mentor to review your submission
- Check your email for any additional requirements
- **MSU Students:** Complete RCR training by July 11

PREPARE

- Keep an eye on your email for your assigned poster session time
- Print the 40" x 32" poster and practice your pitch
- Visit urca.msu.edu for helpful tips and resources

PRESENT

- Arrive at the STEM Facility 30 minutes before your poster session begins on 7/24/24
- Be prepared to share your work and answer any questions on your research or creative activity

FAQ

- **Do I need to submit my presentation virtually if I'm presenting in-person?**
 - No. While you can upload the poster to Symposium to share your research with those who cannot attend in-person, it's not required.
- **Can I only present posters?**
 - Yes. Mid-SURE only accepts research posters.
- **I'm not a student at MSU, how do I register on Spartan Experience Record (SER)?**
 - For a Spartan Experience Record registration walkthrough, visit urca.msu.edu/mid-sure
- **My research isn't completed yet, can I still participate?**
 - Yes! Research is a process and we welcome all stages. Just make sure your abstract is completed to the best of your ability by July 11th.
- **Do my mentors and co-presenters also need an account on Spartan Experience Record?**
 - If your mentor(s) or co-presenter(s) are not from MSU, they will need to create an account. MSU students and mentors can use their NetID to log in.
- **I missed the registration deadline, can I still participate in MidSURE?**
 - Yes! You can still register after June 17th using the late registration link on urca.msu.edu/mid-sure/reg. You just may not get the first category or modality of your choice so register before June 20th to let us know you intend to present and to get top priority!